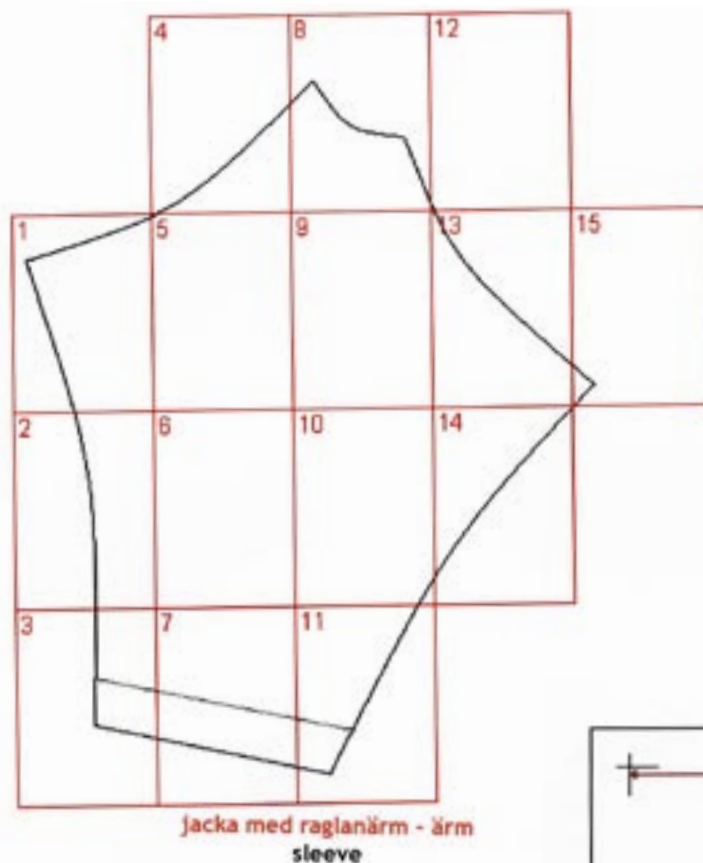


# Fashion Freaks



## MÖNSTERDELAR

### JACKA MED RAGLANÄRM FÖR MÄN - ÄRM

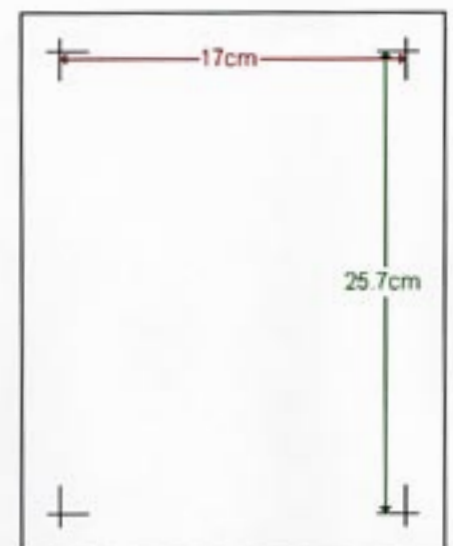


Så här sätter du ihop A4-bladen till ett helt mönsterark för en äm.

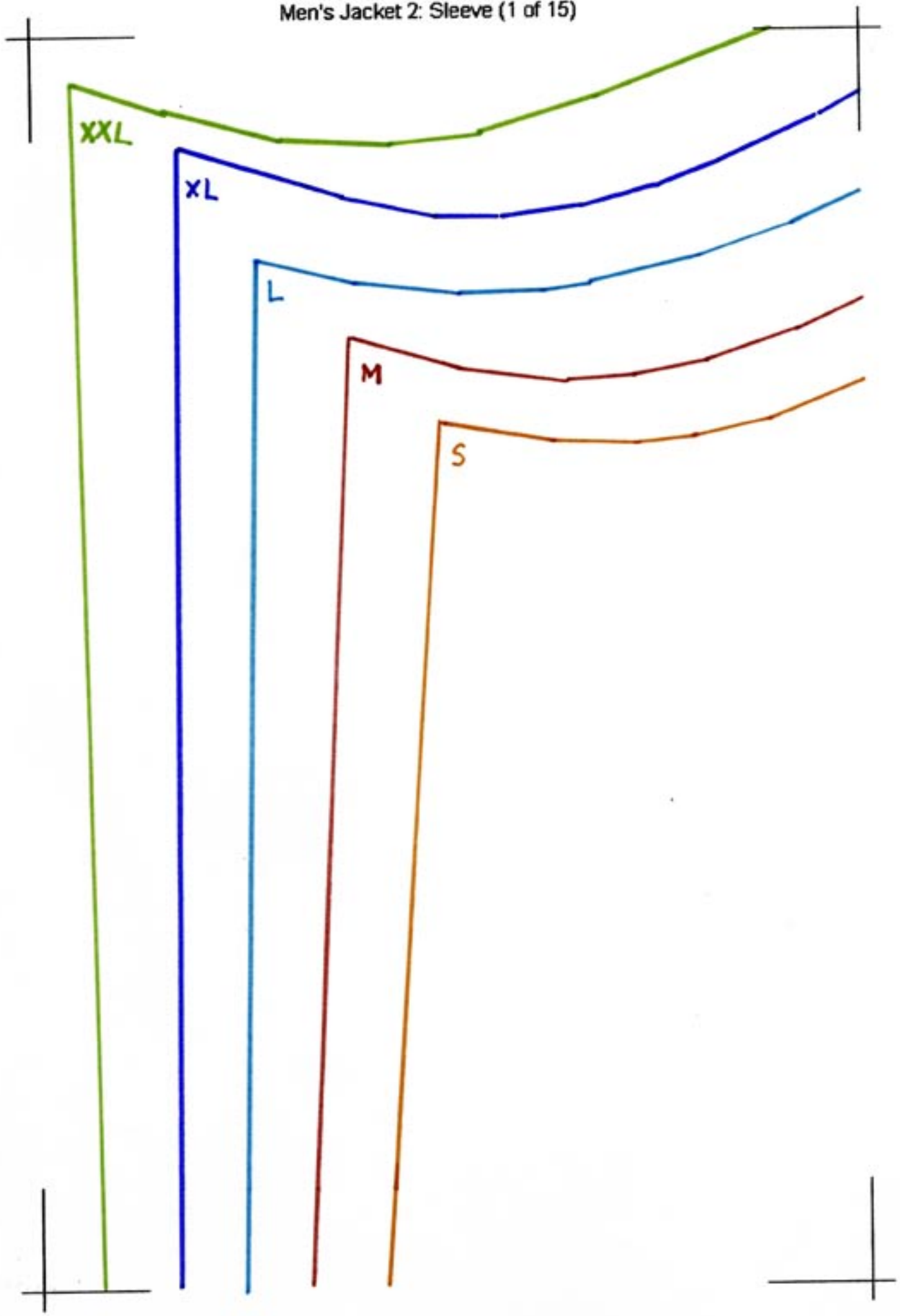
Varje sida i den här pdf-filen innehåller en numrerad del av detta mönster. Du sätter ihop dem genom att matcha 'kant-hakarna' mot varandra.

Kom ihåg att skriva ut sidorna på A4-papper (210 x 297 mm) så att måtten på ditt mönster blir korrekta.

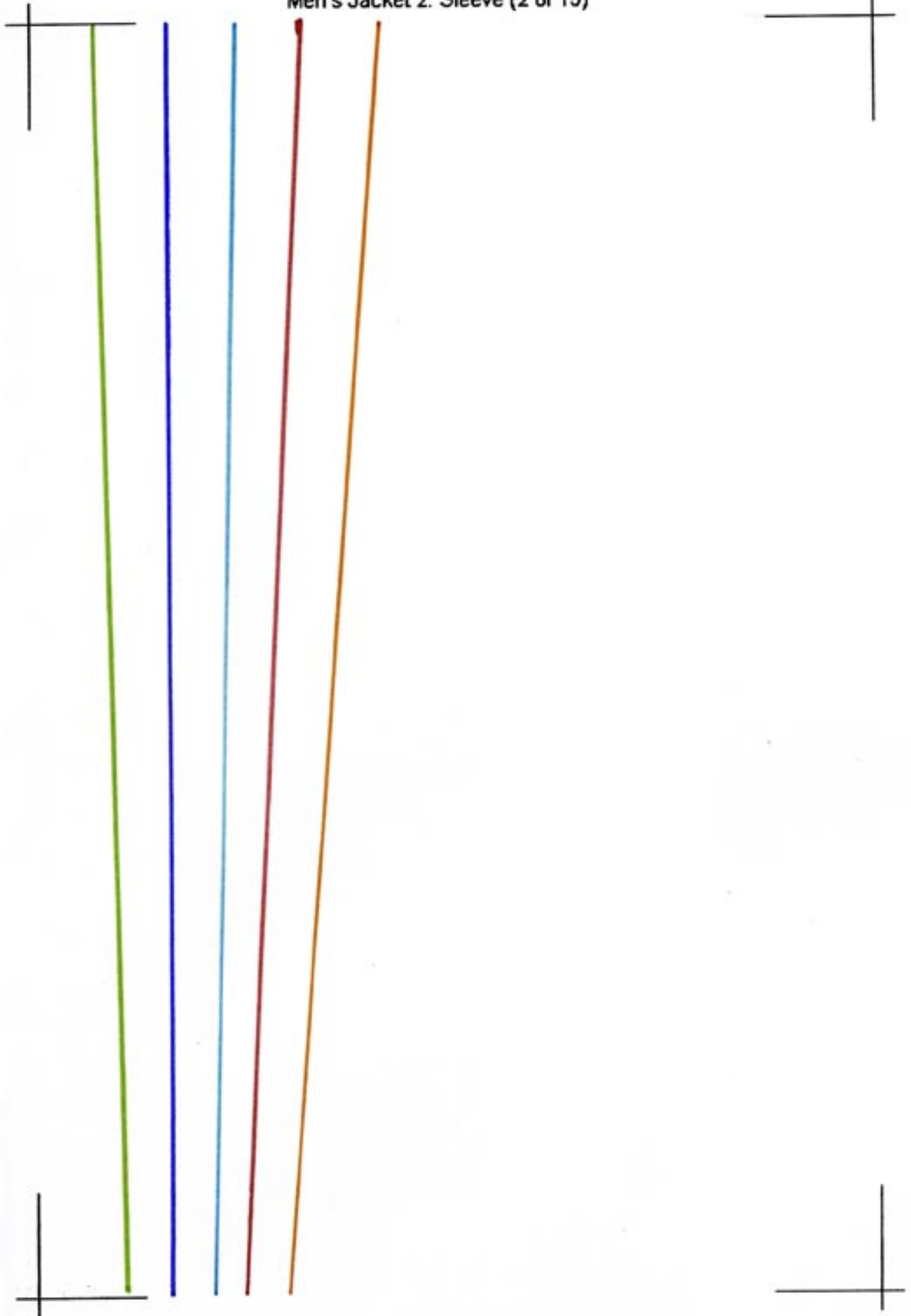
Mät avståndet mellan 'kant-hakarna' för att vara säker att du får rätt storlek. Avståndet är (170 x 257 mm)



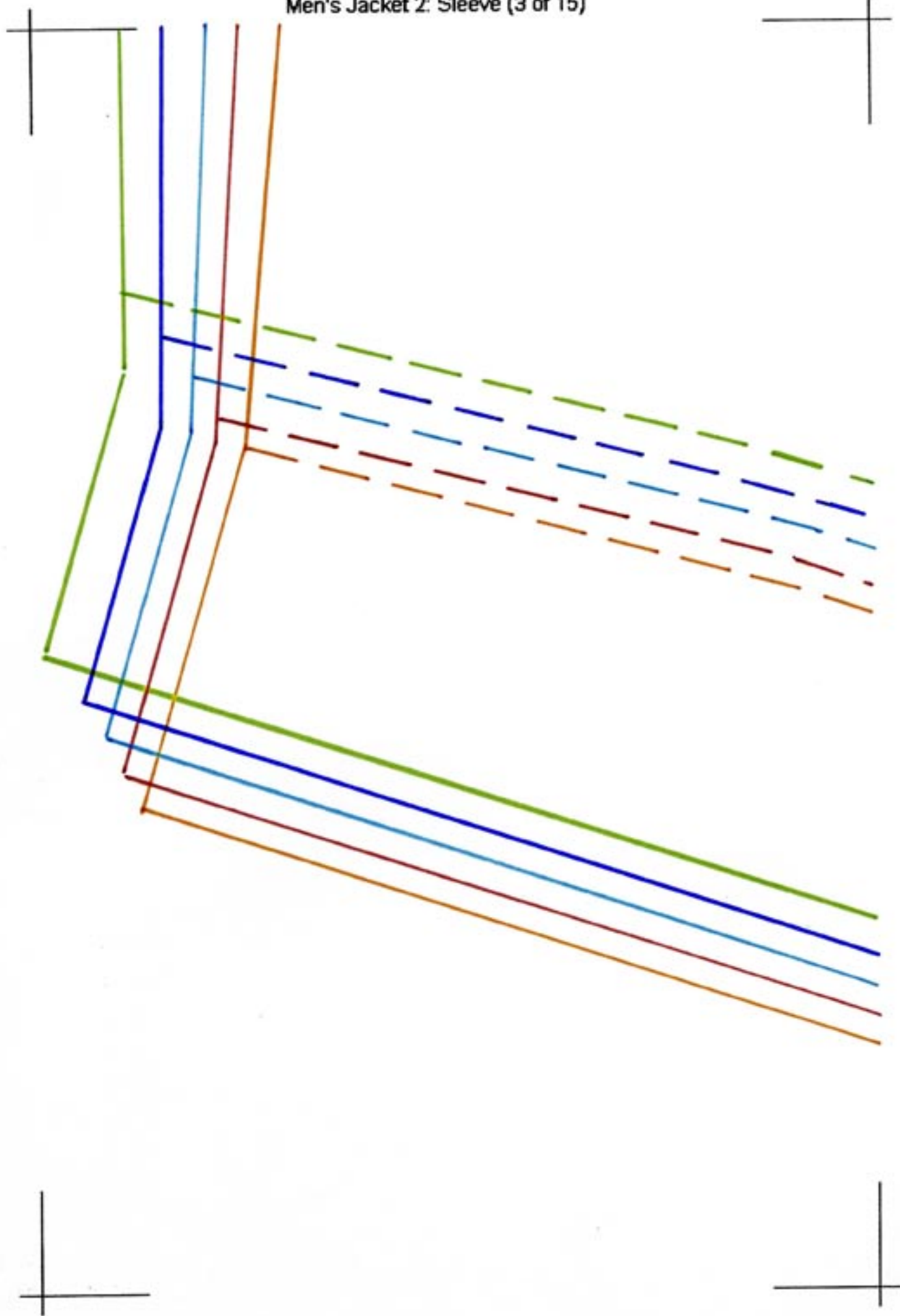
Men's Jacket 2: Sleeve (1 of 15)



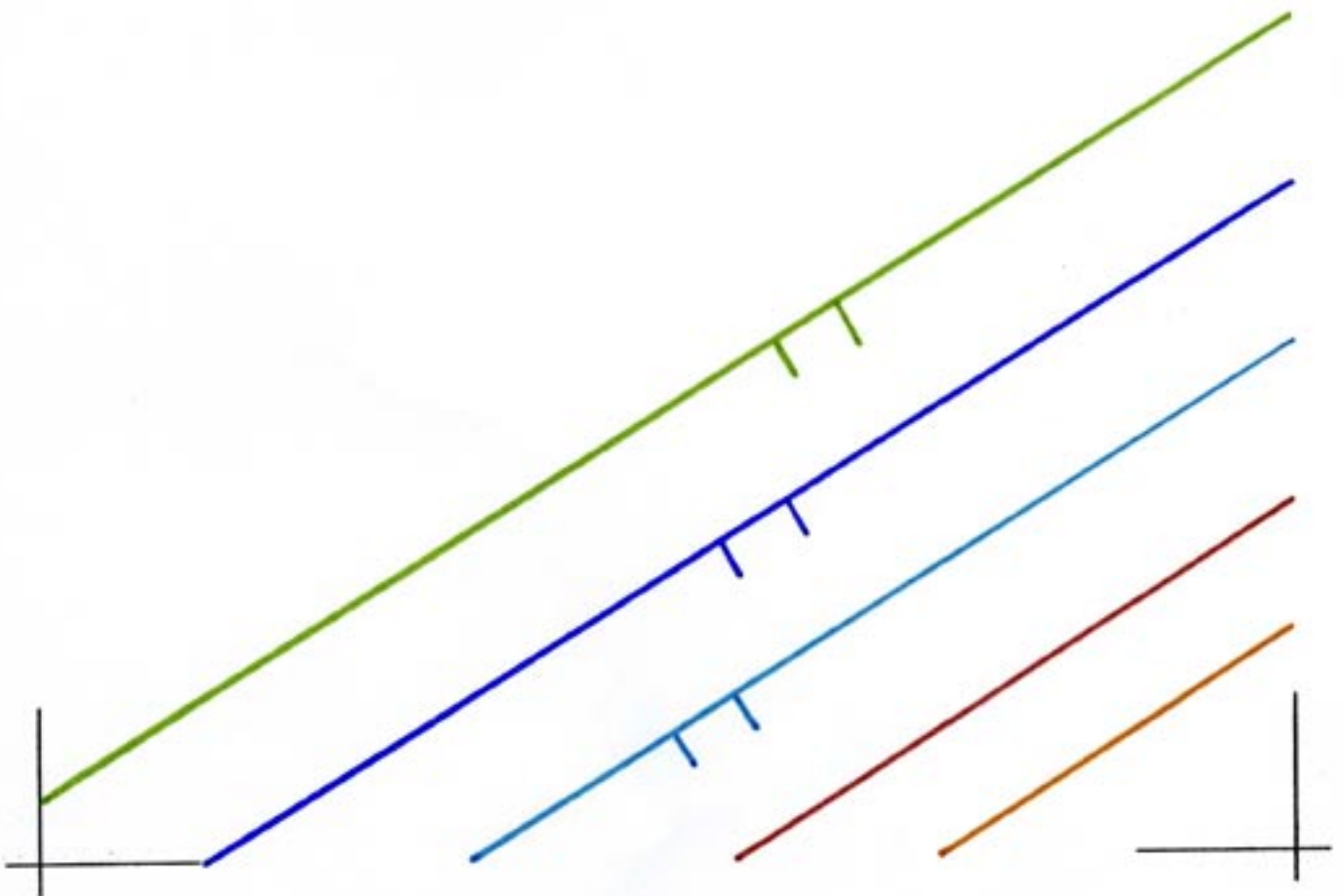
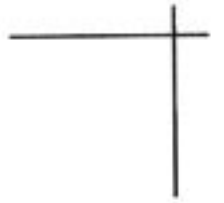
Men's Jacket 2: Sleeve (2 of 15)



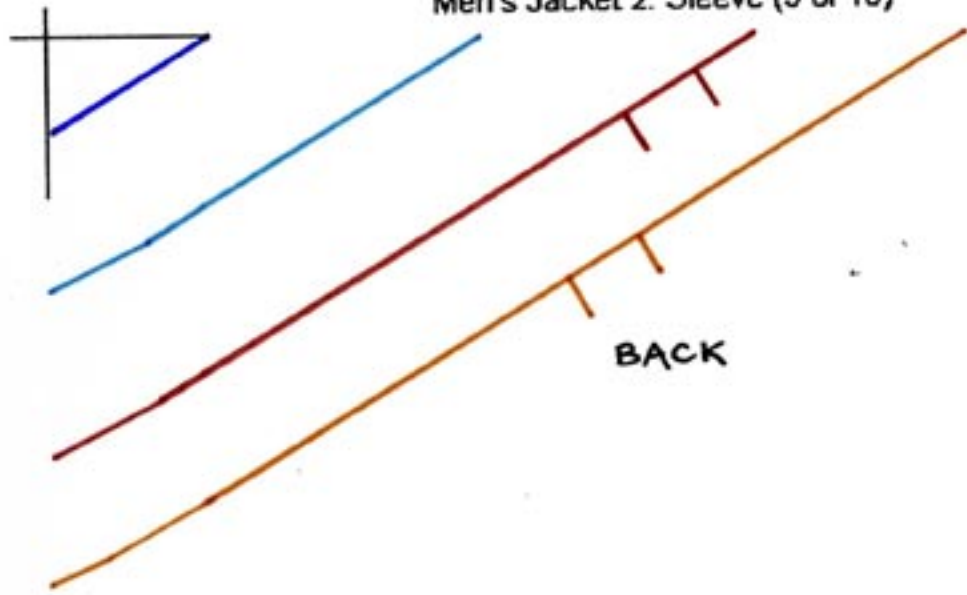
Men's Jacket 2: Sleeve (3 of 15)



Men's Jacket 2: Sleeve (4 of 15)



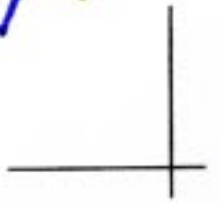
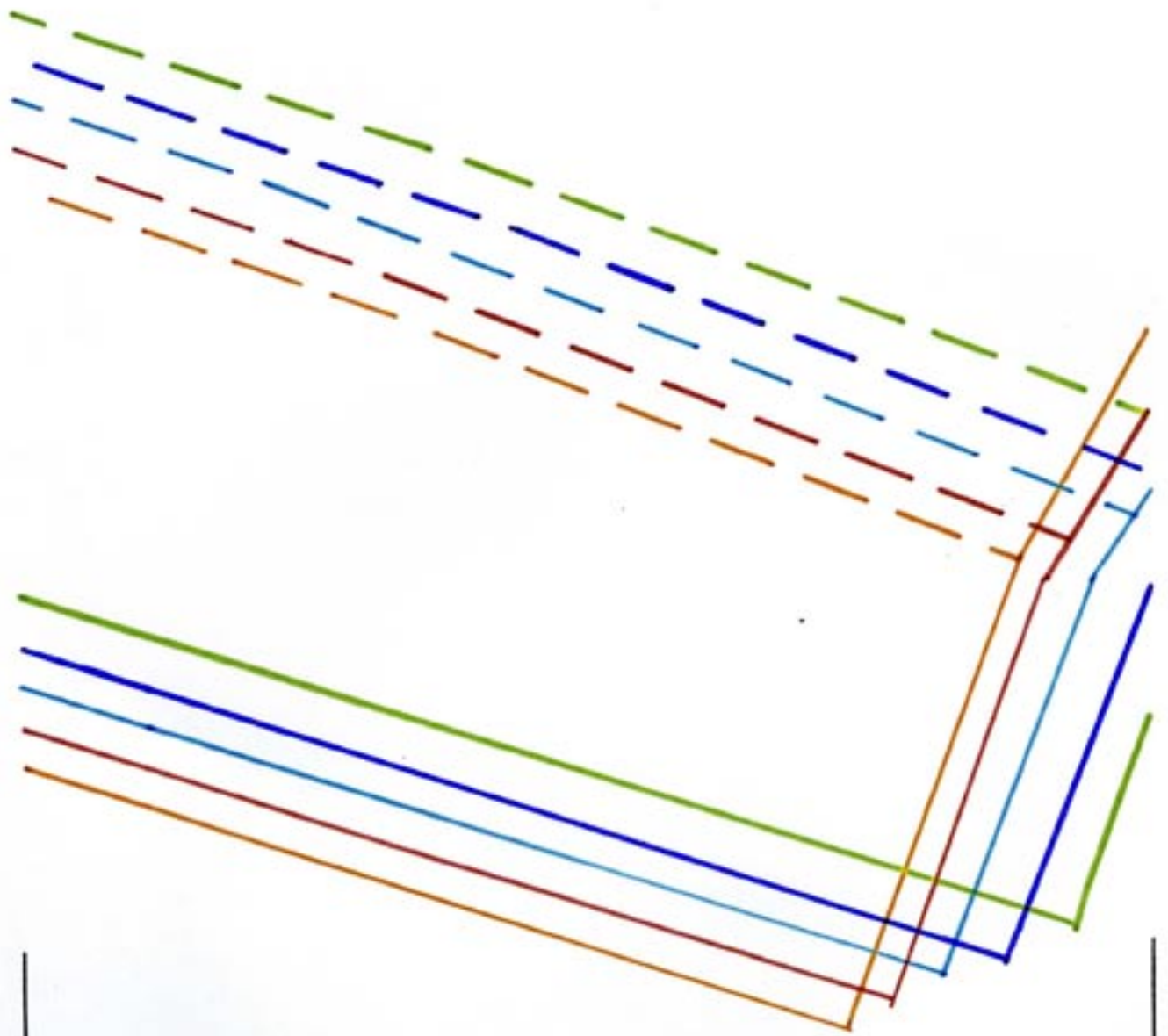
Men's Jacket 2: Sleeve (5 of 15)



Men's Jacket 2: Sleeve (6 of 15)

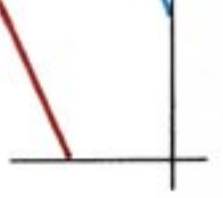
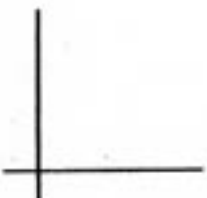
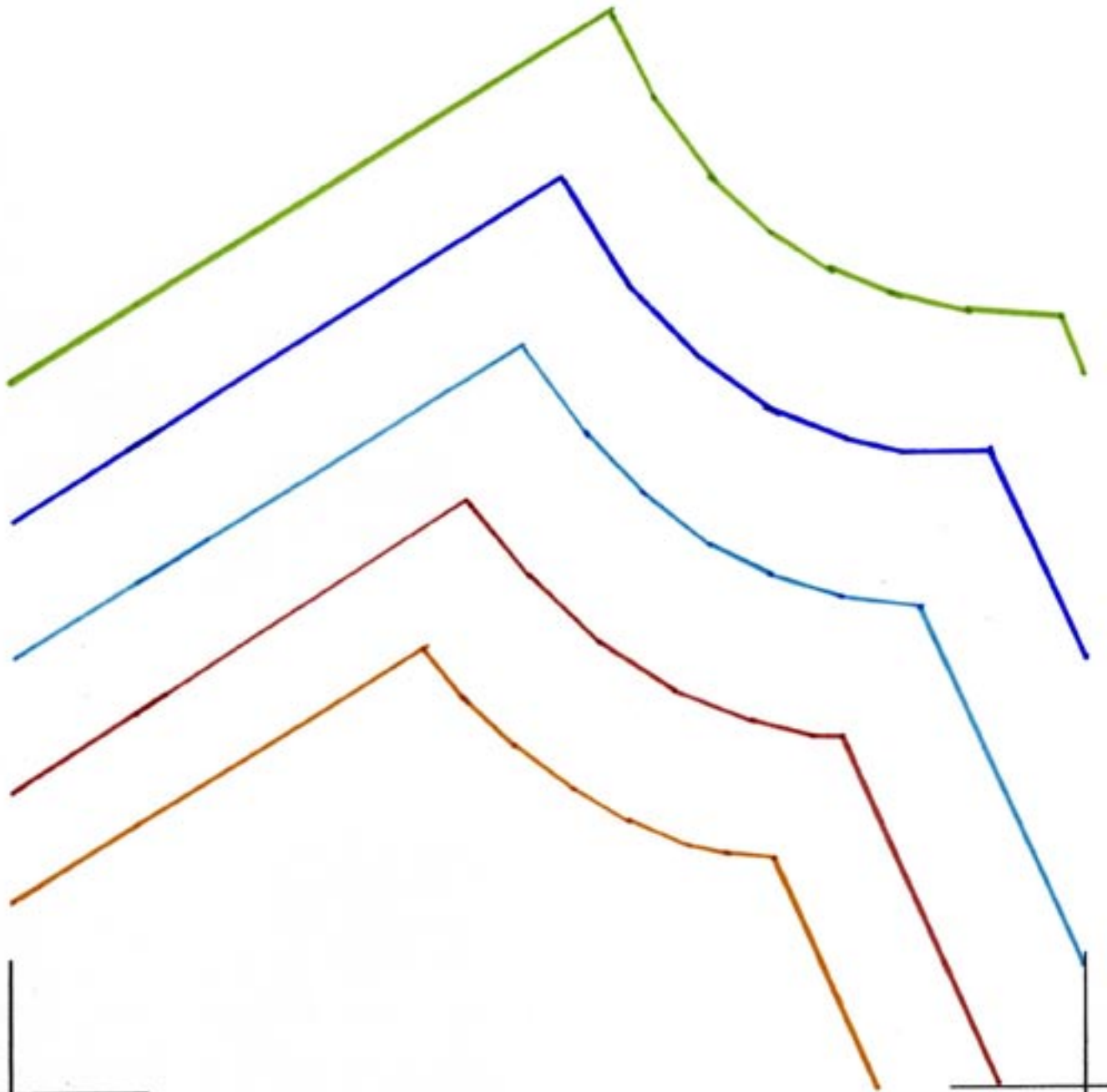


Men's Jacket 2: Sleeve (7 of 15)





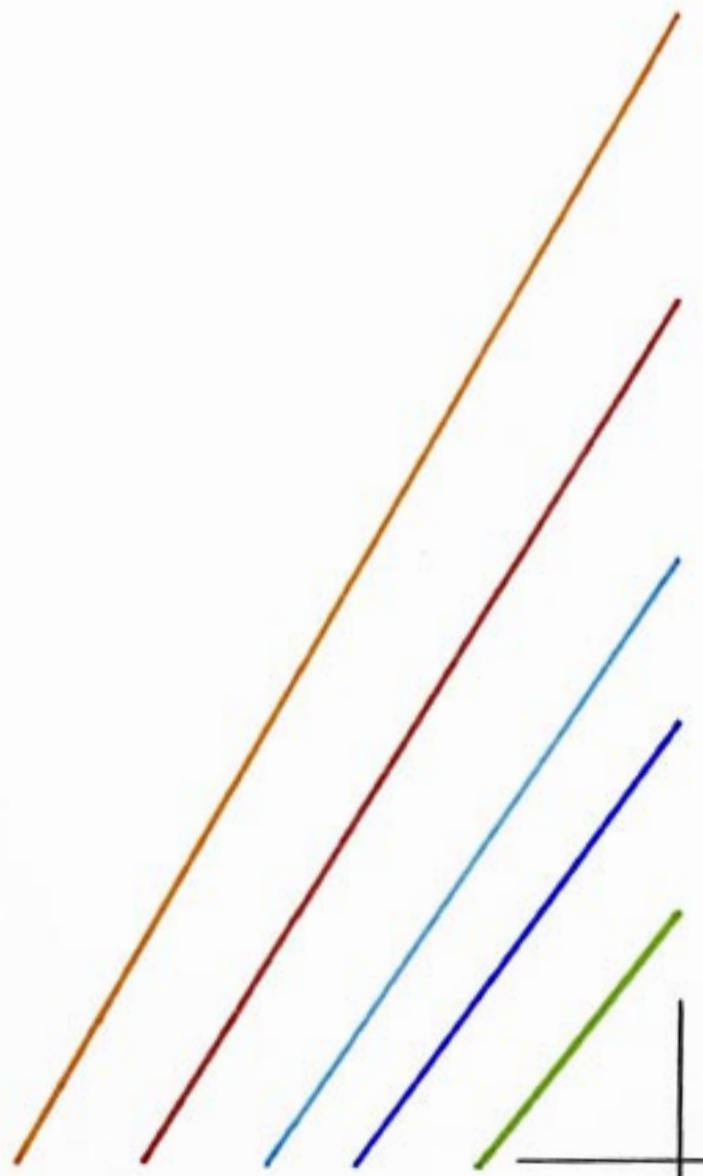
Men's Jacket 2: Sleeve (8 of 15)



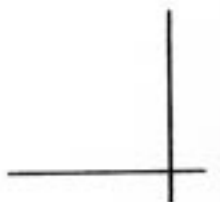
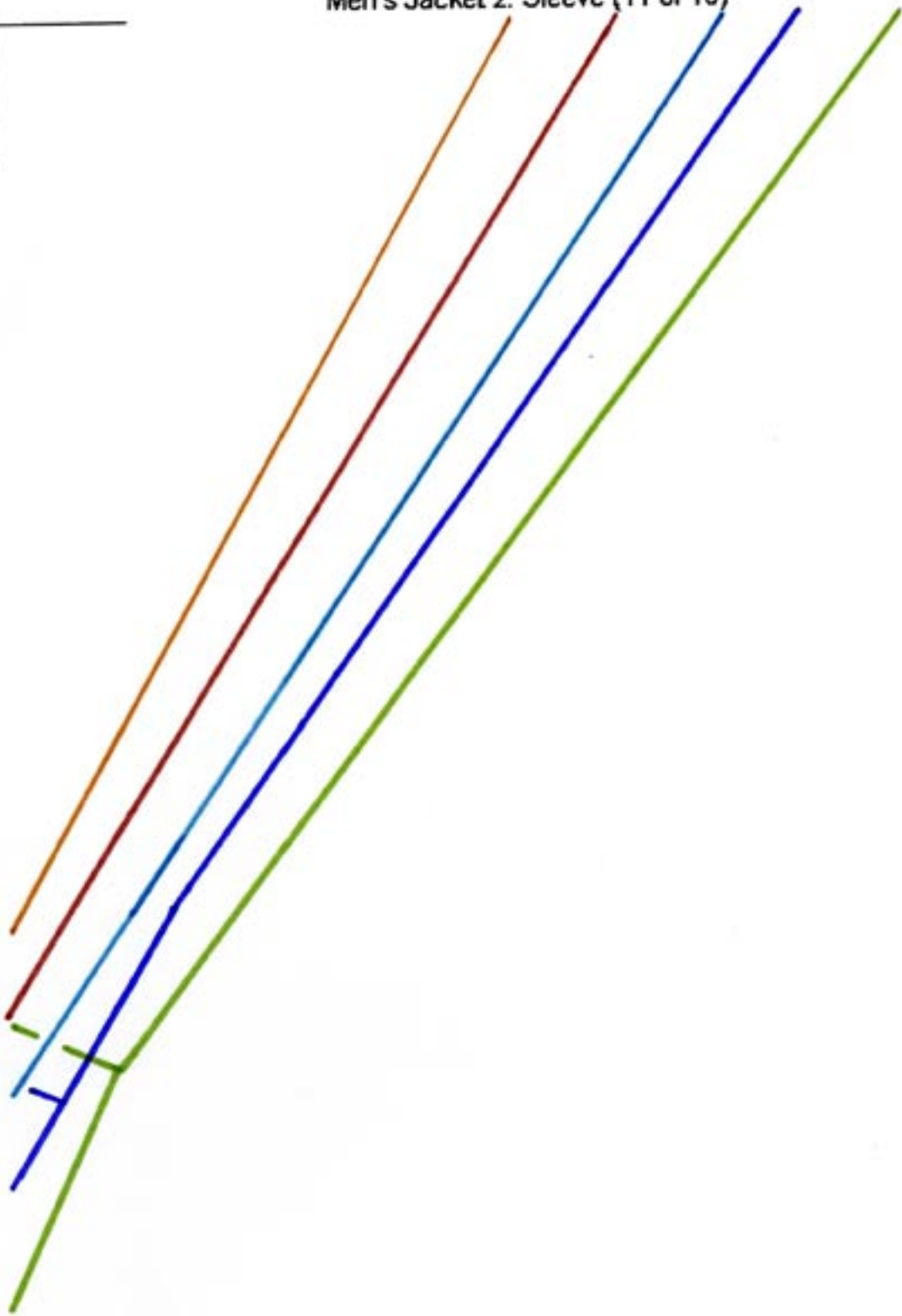
Men's Jacket 2: Sleeve (9 of 15)



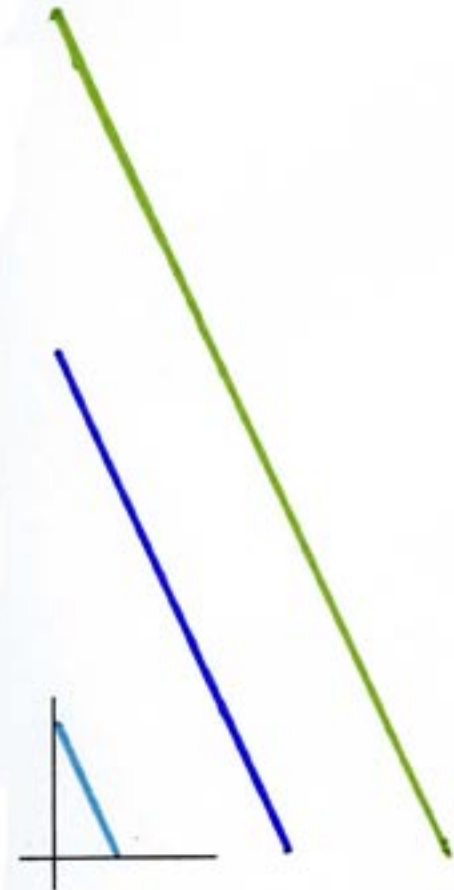
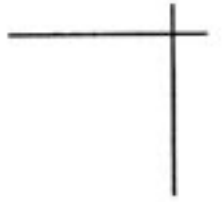
Men's Jacket 2: Sleeve (10 of 15)



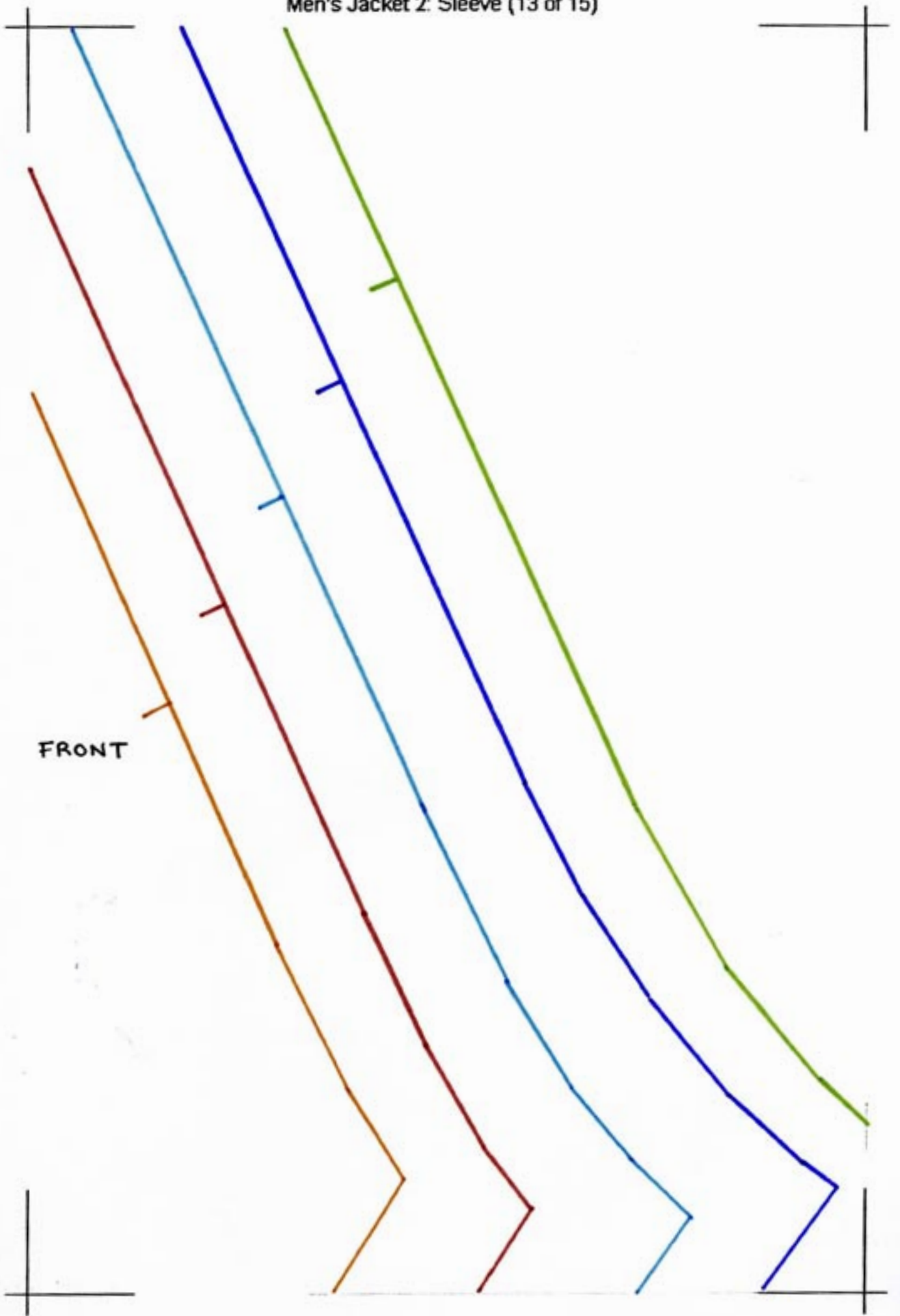
Men's Jacket 2: Sleeve (11 of 15)



Men's Jacket 2: Sleeve (12 of 15)

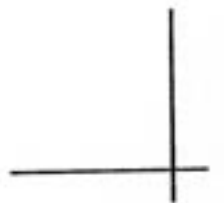
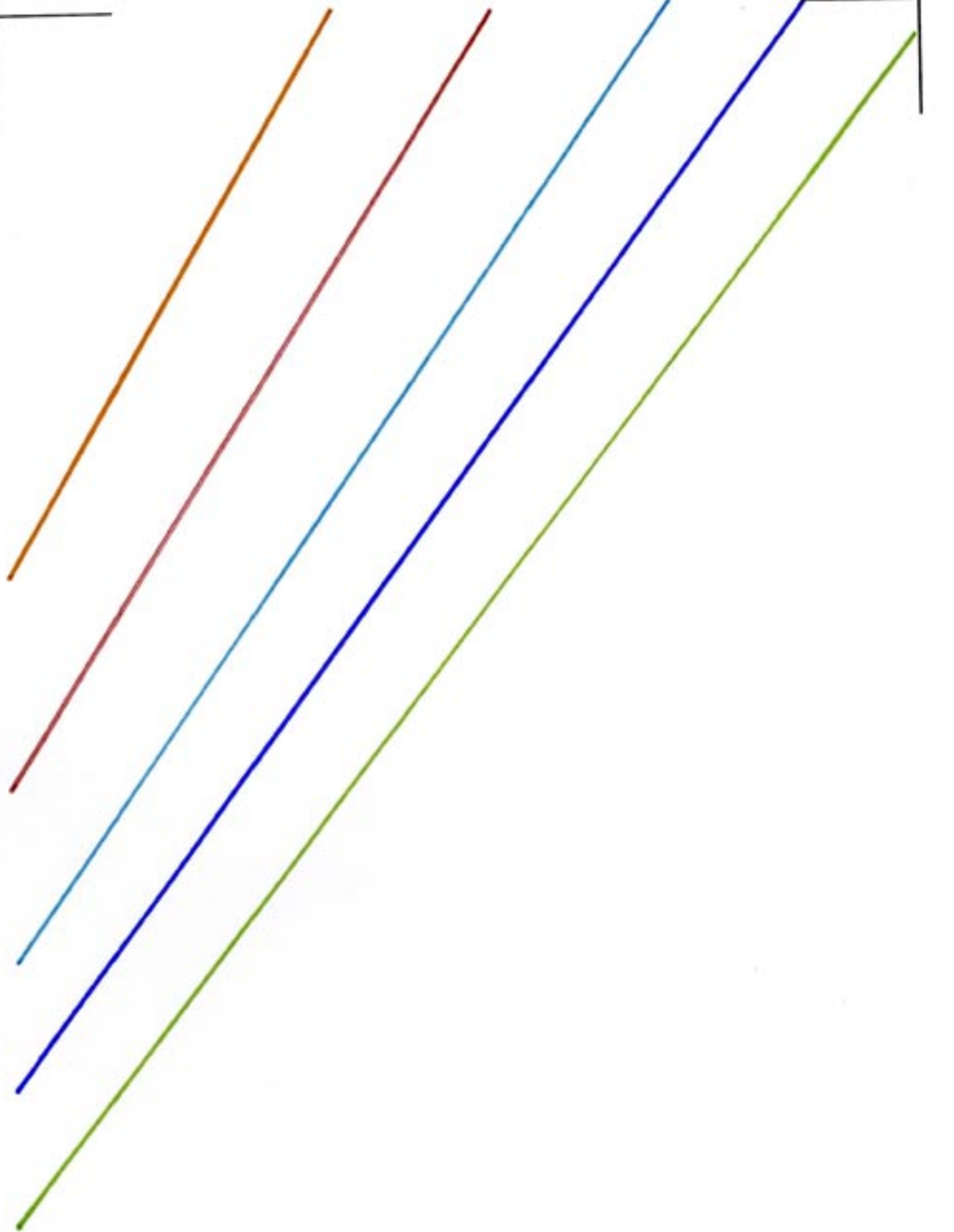


Men's Jacket 2: Sleeve (13 of 15)



FRONT

Men's Jacket 2: Sleeve (14 of 15)



Men's Jacket 2: Sleeve (15 of 15)

