

Fashion Freaks



MÖNSTERDELAR

JACKA I KAVAJSTIL FÖR MÄN - BÖJD ÄRM

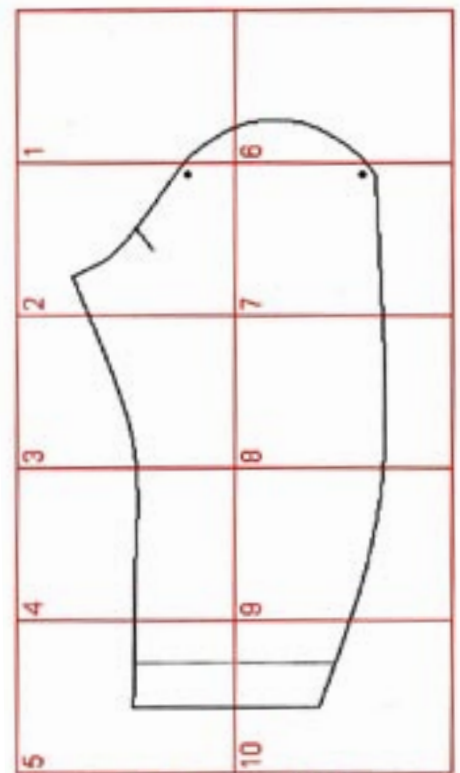
Så här sätter du ihop A4-bladen till hela mönsterark för de två mönsterdelar som bildar en böjd ärm.



jacka i kavajstil
böjd ärm 1
curved sleeve 1

Varje sida i den här pdf-filen innehåller en numrerad del av dessa två mönsterdelar.

Du sätter ihop dem genom att matcha 'kant-hakarna' mot varandra.

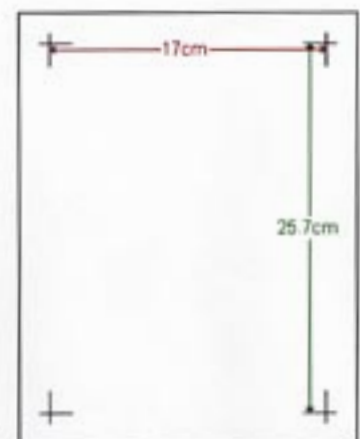


jacka i kavajstil
böjd ärm 2
curved sleeve 2

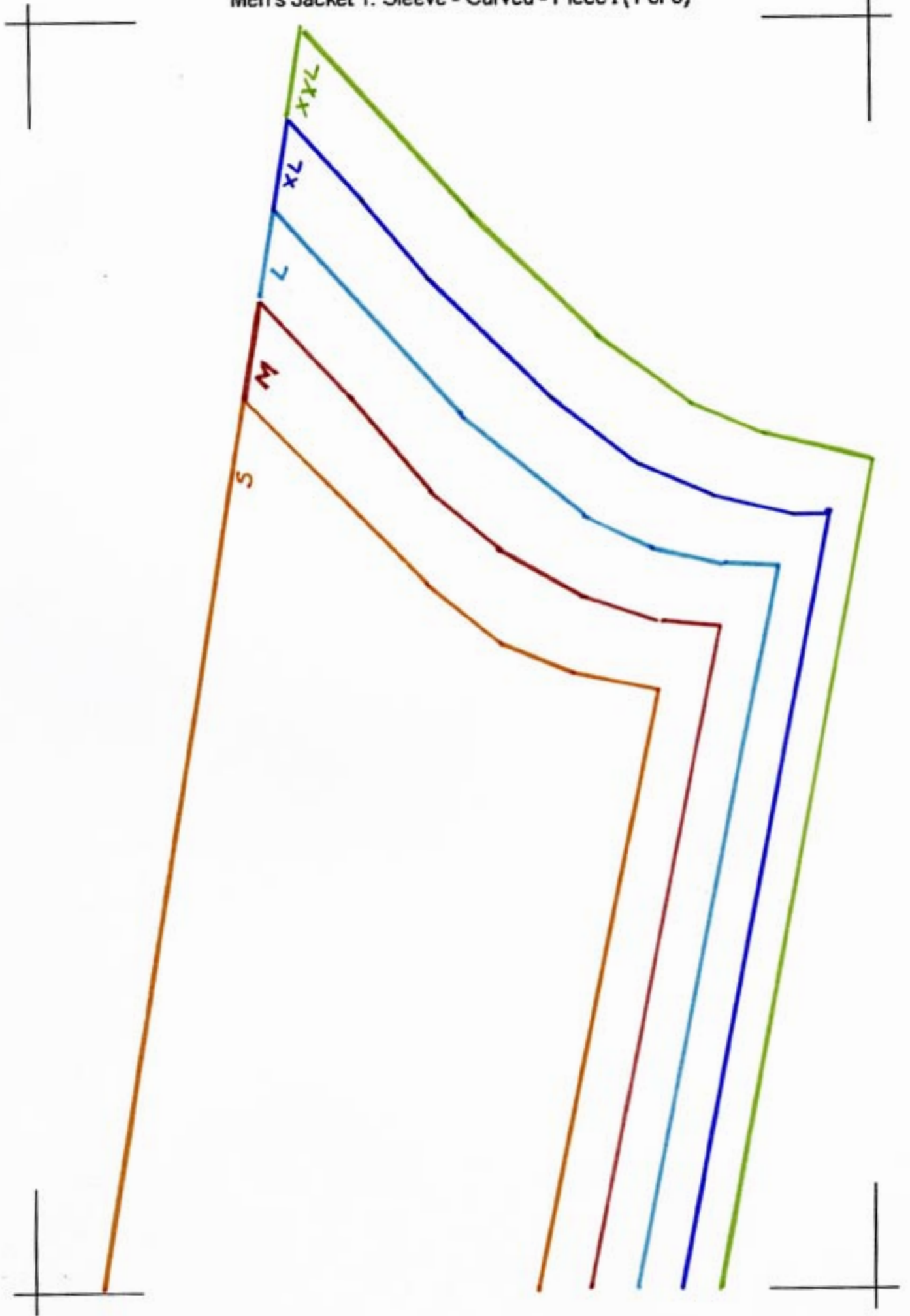
Kom ihåg att skriva ut sidorna på A4-papper (210 x 297 mm) så att måtten på ditt mönster blir korrekta.

Mät avståndet mellan 'kant-hakarna' för att vara säker att du får rätt storlek.

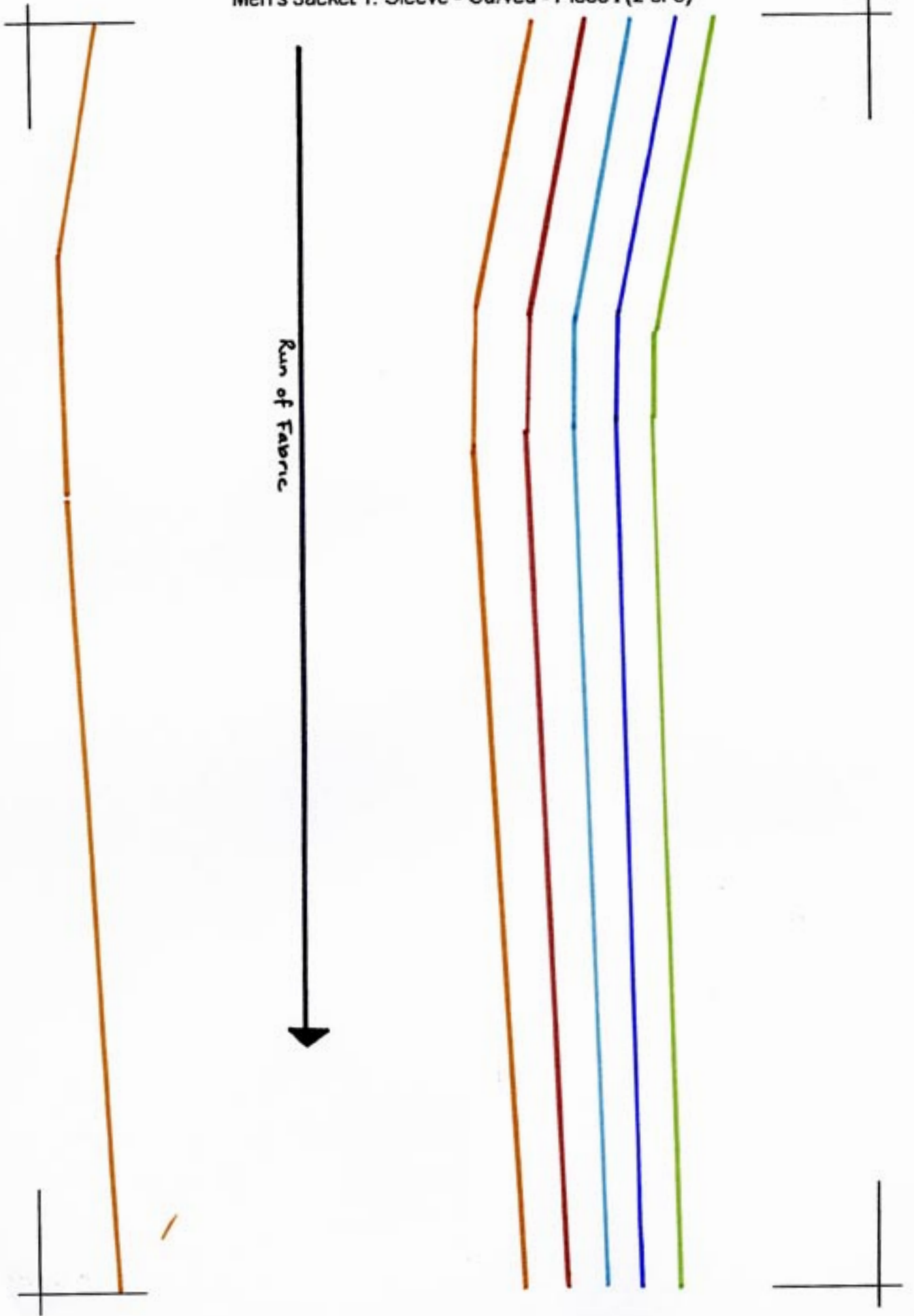
Avståndet är (170 x 257 mm)



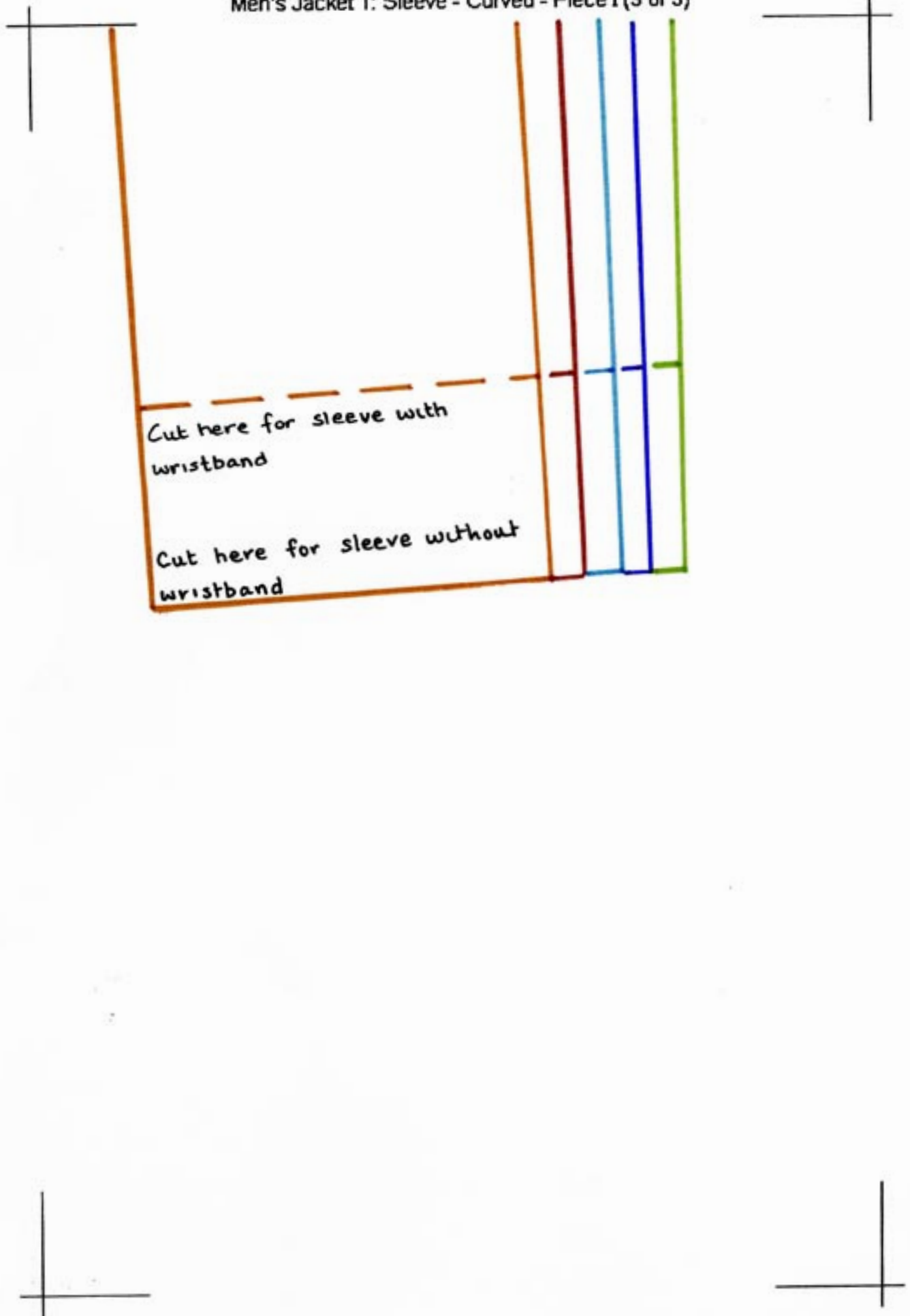
Men's Jacket 1: Sleeve - Curved - Piece I (1 of 3)



Men's Jacket 1: Sleeve - Curved - Piece I (2 of 3)



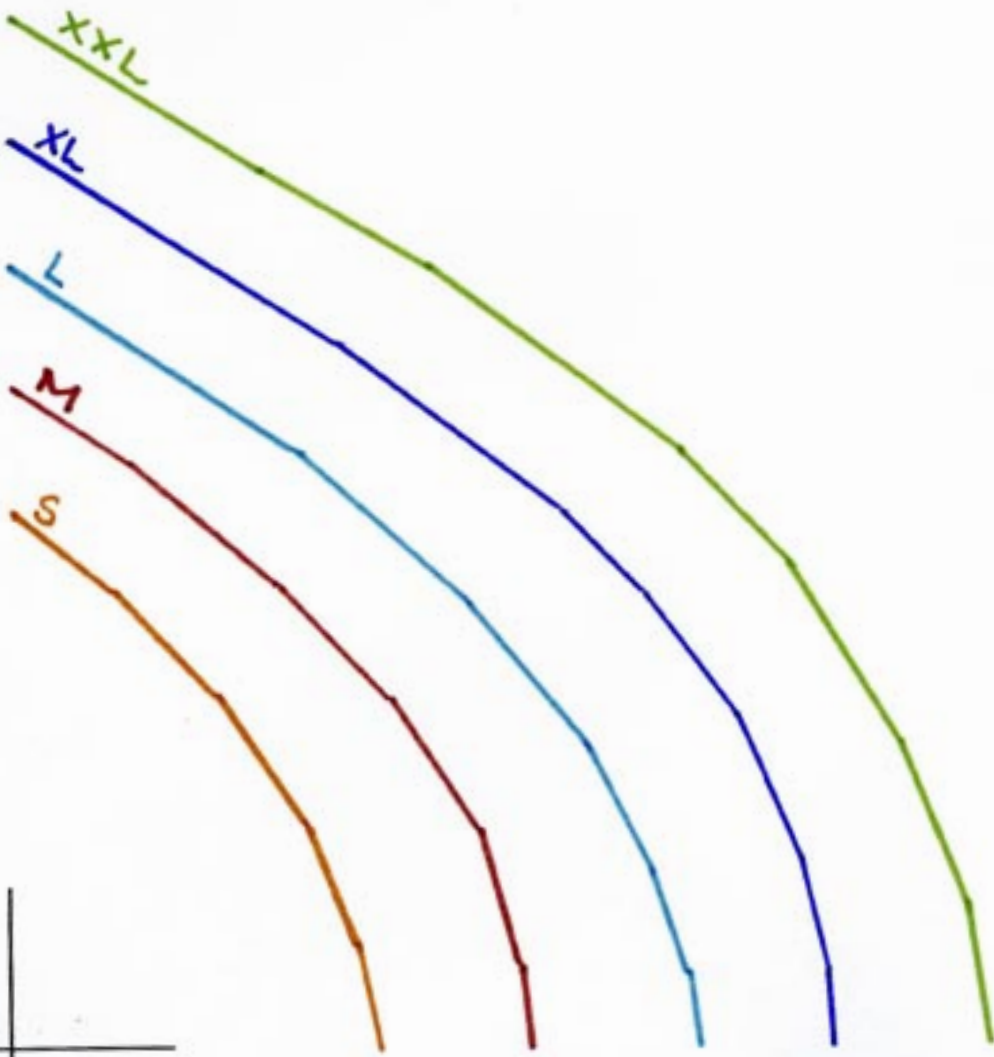
Men's Jacket 1: Sleeve - Curved - Piece I (3 of 3)



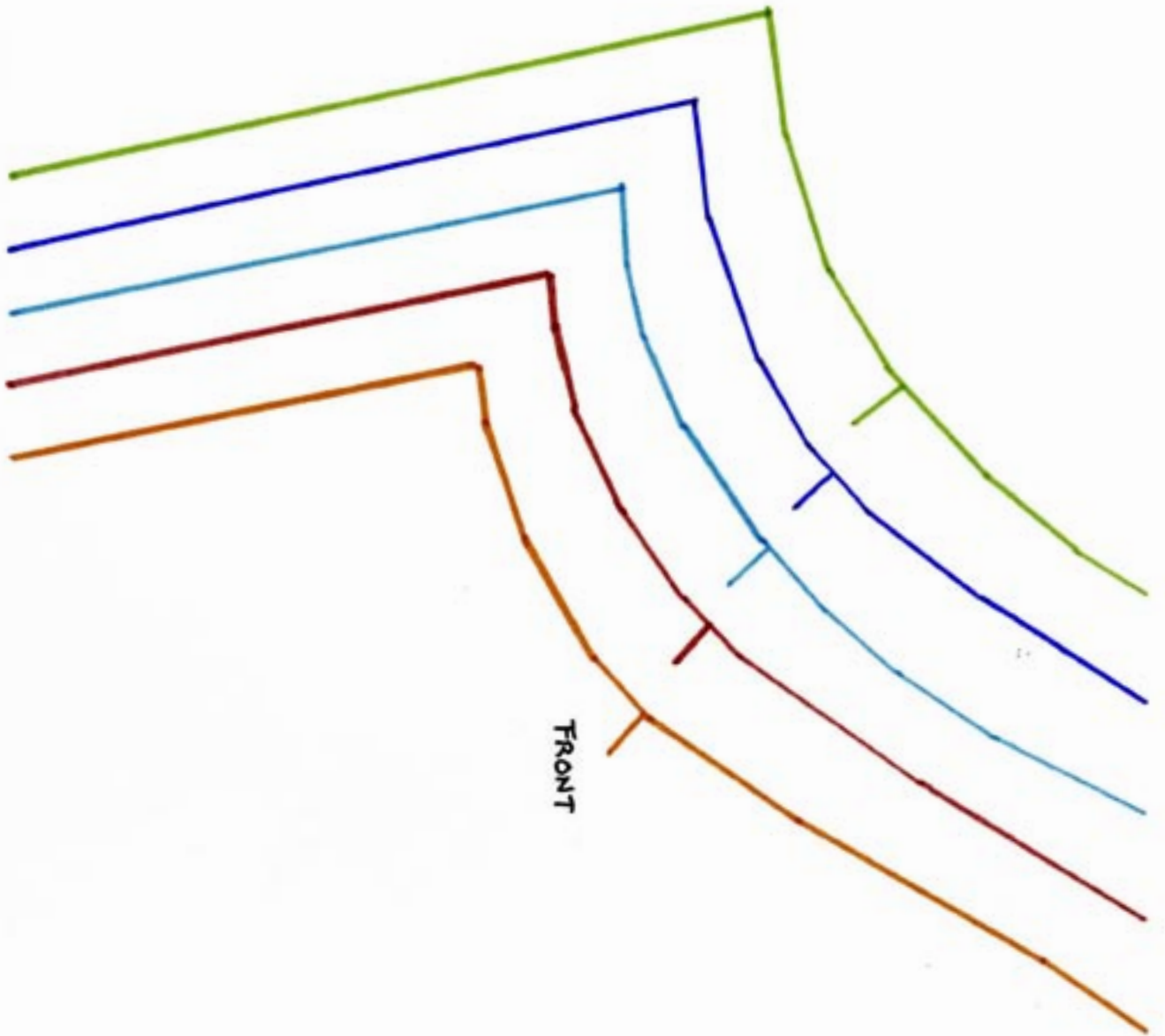
Cut here for sleeve with
wristband

Cut here for sleeve without
wristband

Men's Jacket 1: Sleeve - Curved - Piece II (1 of 10)

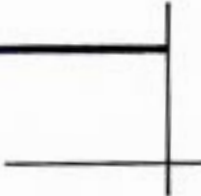
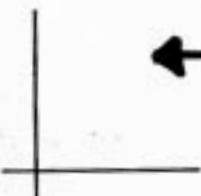
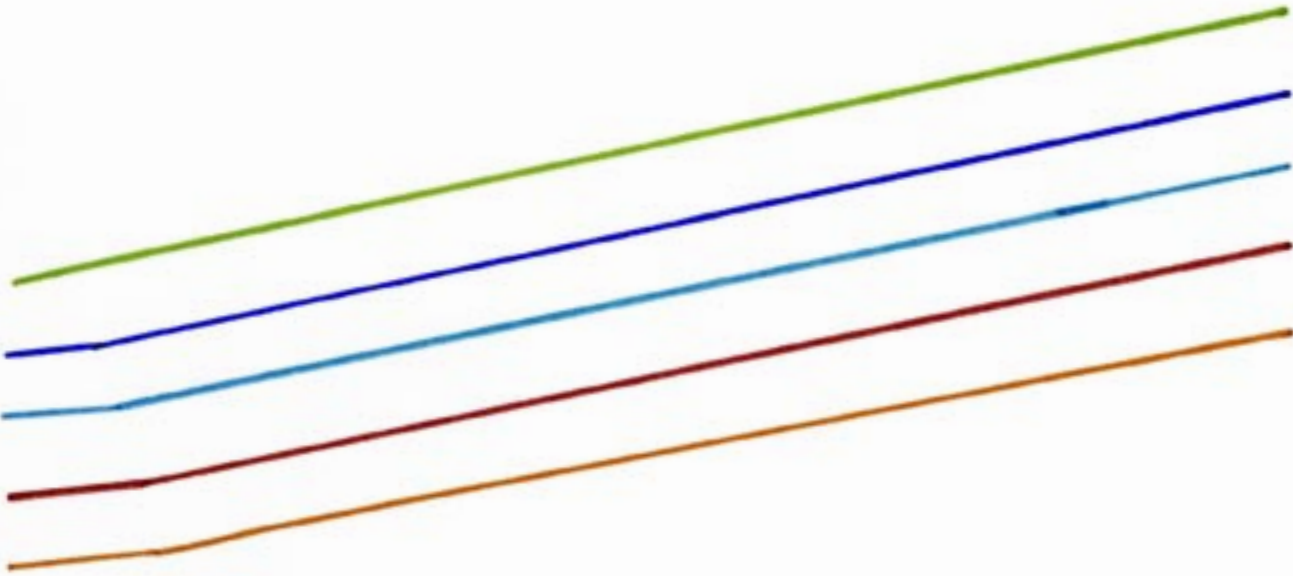
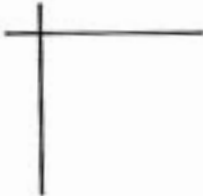


Men's Jacket 1: Sleeve - Curved - Piece II (2 of 10)



Run of fabric

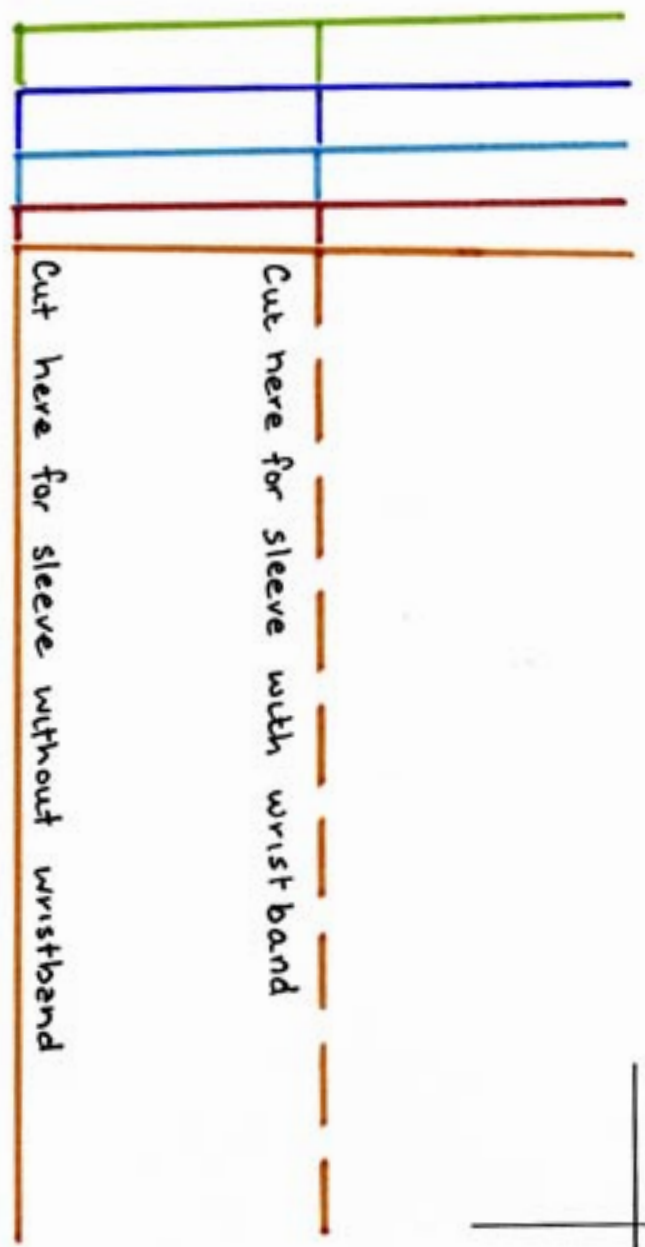
Men's Jacket 1: Sleeve - Curved - Piece II (3 of 10)



Men's Jacket 1: Sleeve - Curved - Piece II (4 of 10)

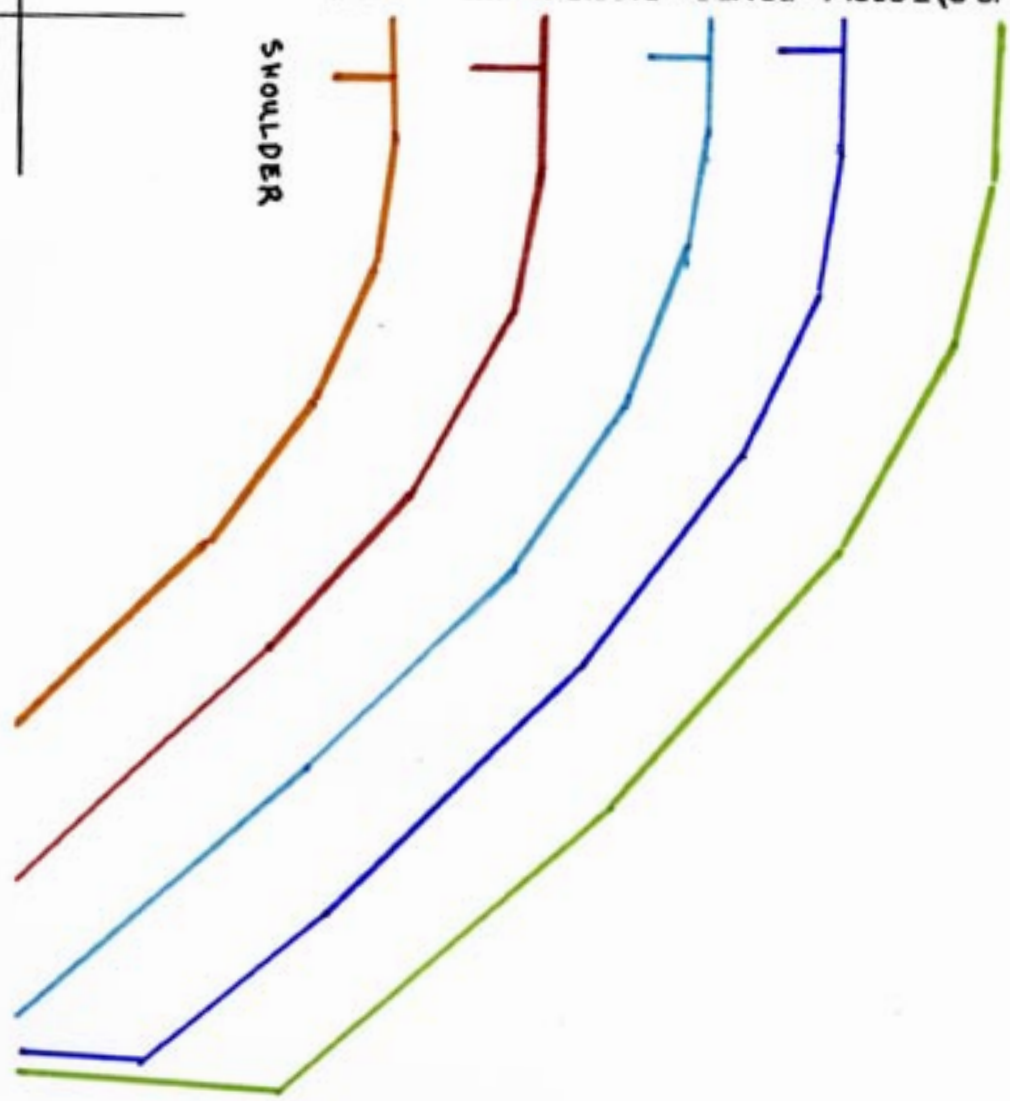


Men's Jacket 1: Sleeve - Curved - Piece II (5 of 10)



Men's Jacket 1: Sleeve - Curved - Piece II (6 of 10)

SHOULDER



Men's Jacket 1: Sleeve - Curved - Piece II (7 of 10)



Men's Jacket 1: Sleeve - Curved - Piece II (8 of 10)



Men's Jacket 1: Sleeve - Curved - Piece II (9 of 10)



Men's Jacket 1: Sleeve - Curved - Piece II (10 of 10)

