

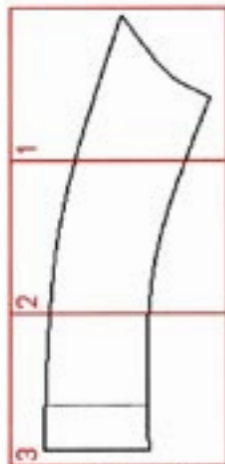
Fashion Freaks



MÖNSTERDELAR

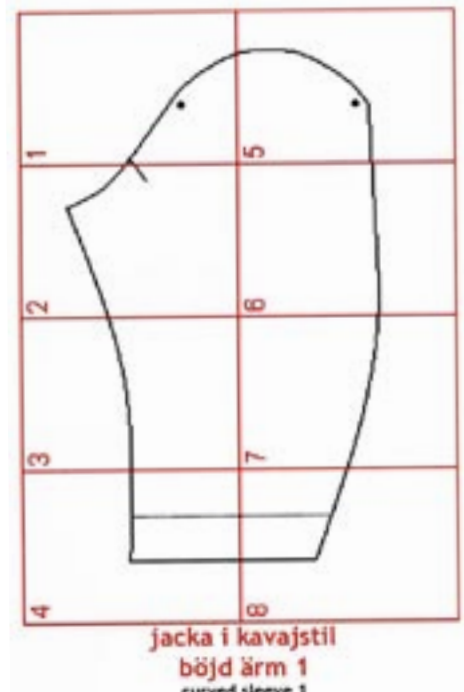
JACKA I KAVAJSTIL FÖR KVINNOR - BÖJD ÄRM

Så här sätter du ihop A4-bladen till hela mönsterark för de två mönsterdelar som bildar en böjd ärm.



jacka i kavajstil
böjd ärm 2
curved sleeve 2

Varje sida i den här pdf-filen innehåller en numrerad del av dessa två mönsterdelar.



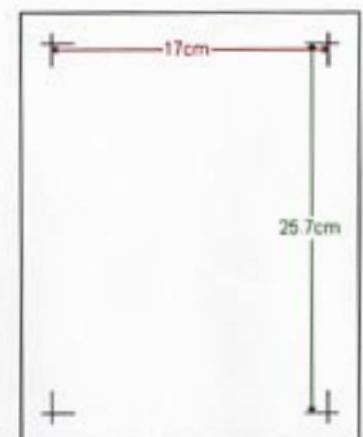
jacka i kavajstil
böjd ärm 1
curved sleeve 1

Du sätter ihop dem genom att matcha 'kant-hakarna' mot varandra.

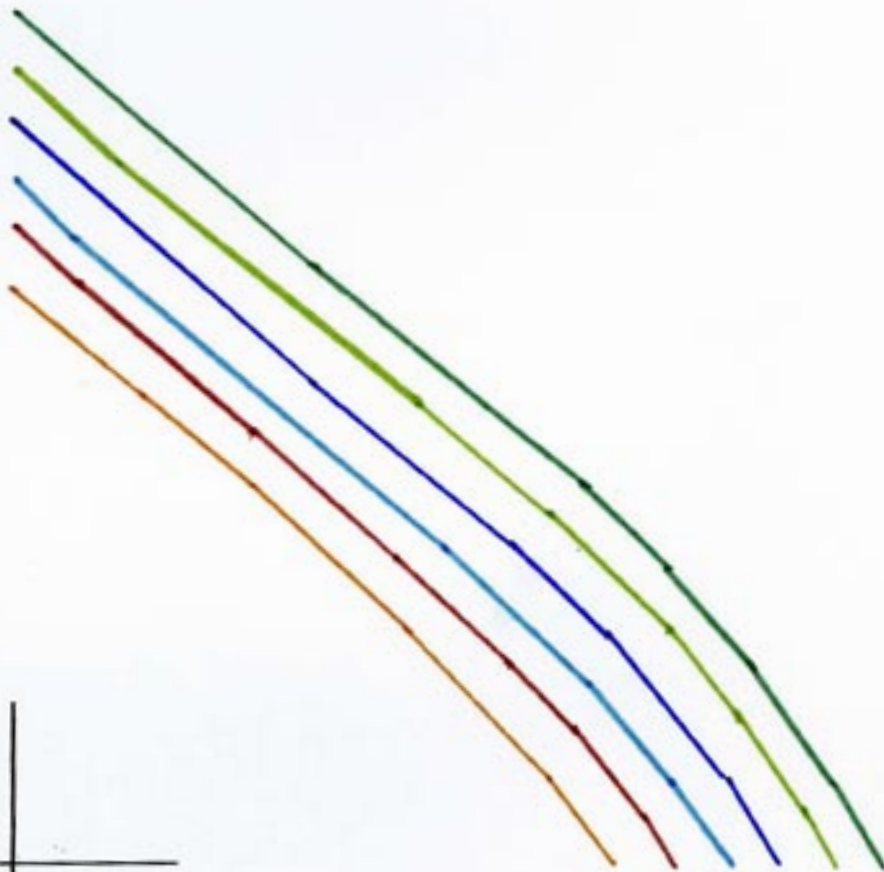
Kom ihåg att skriva ut sidorna på A4-papper (210 x 297 mm) så att måtten på ditt mönster blir korrekta.

Mät avståndet mellan 'kant-hakarna' för att vara säker att du får rätt storlek.

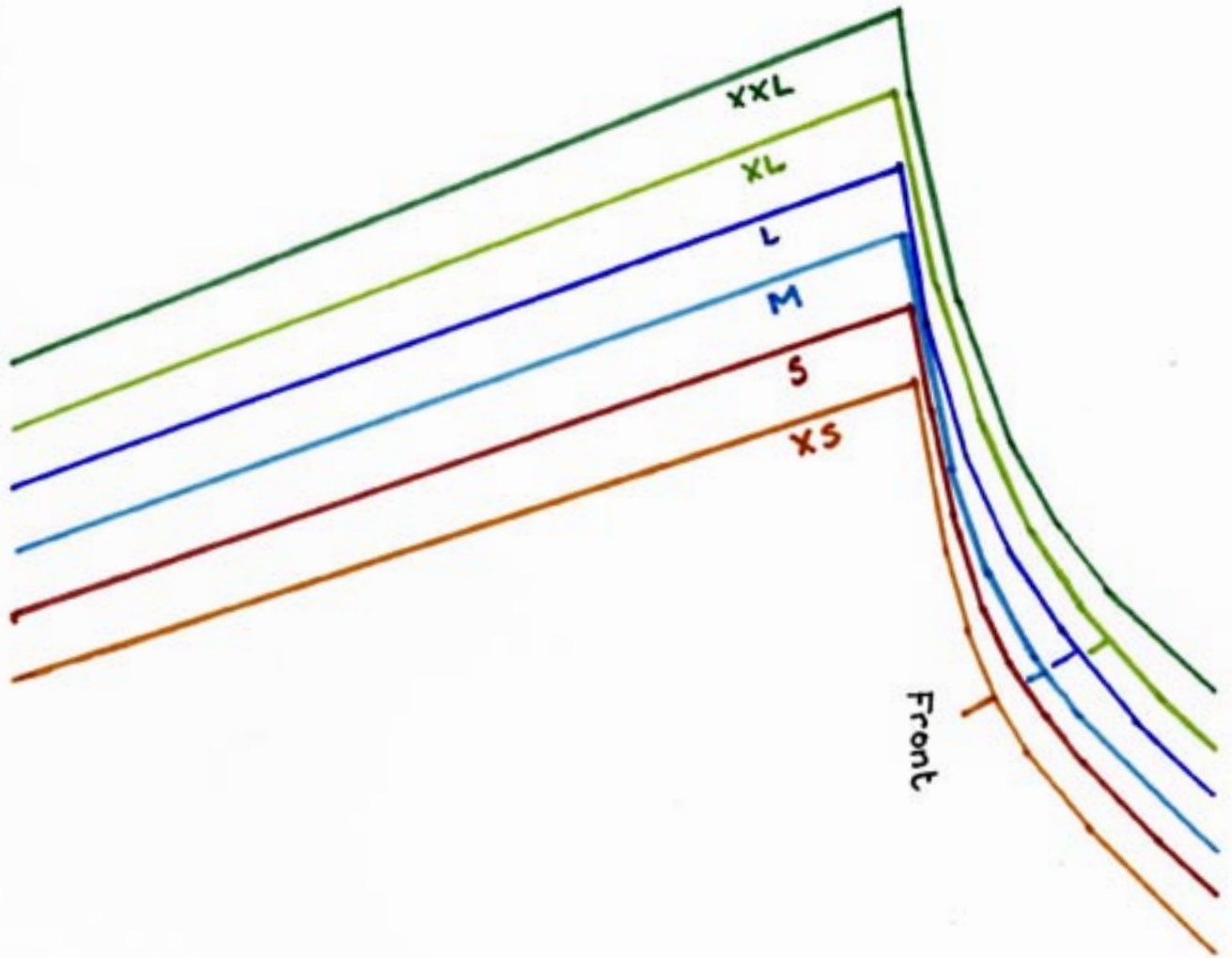
Avståndet är (170 x 257 mm)



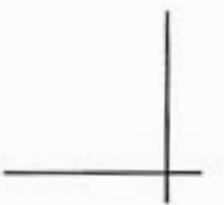
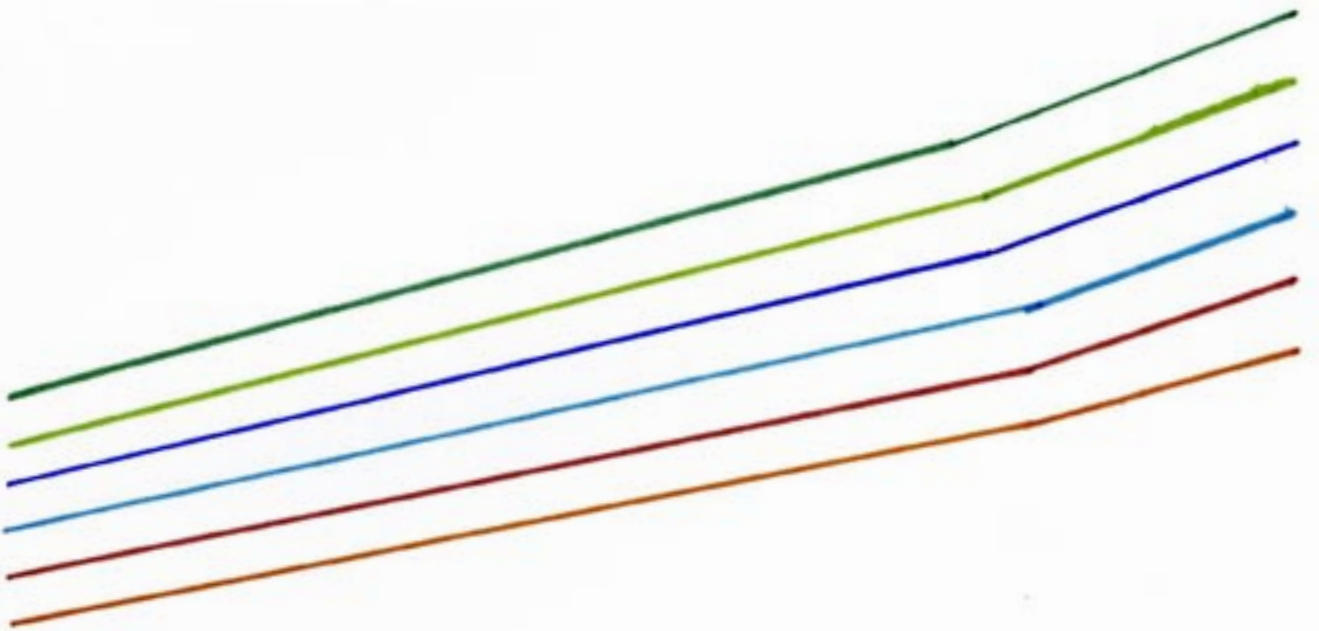
Women's Jacket 1: Sleeve - Curved - Piece I (1 of 8)



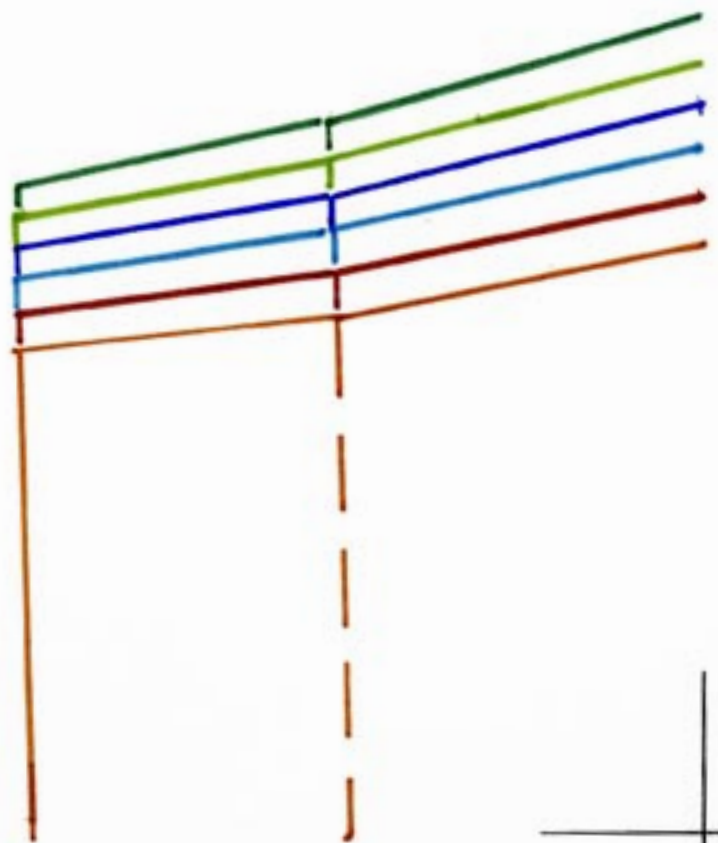
Women's Jacket 1: Sleeve - Curved - Piece I (2 of 8)



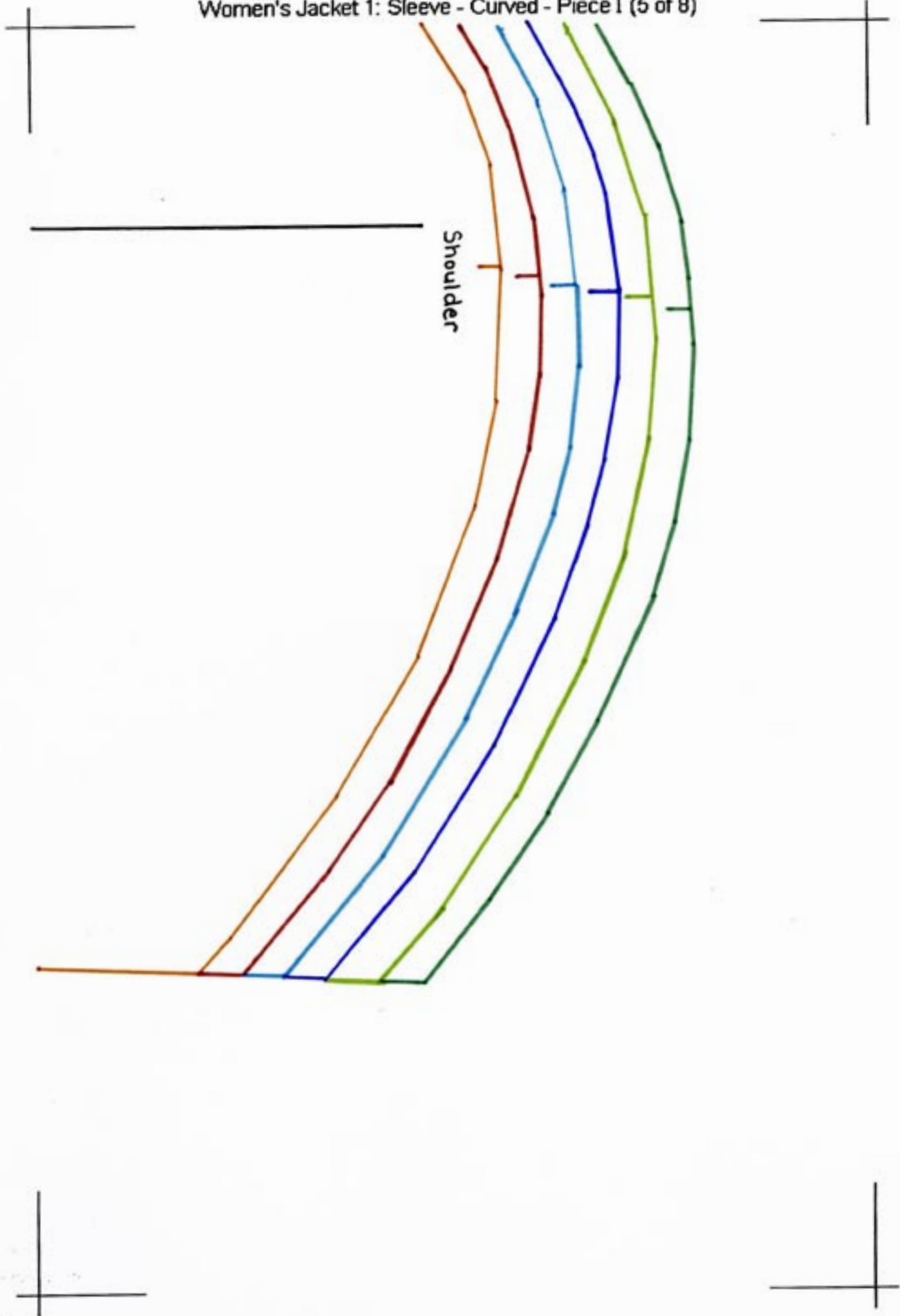
Women's Jacket 1: Sleeve - Curved - Piece I (3 of 8)



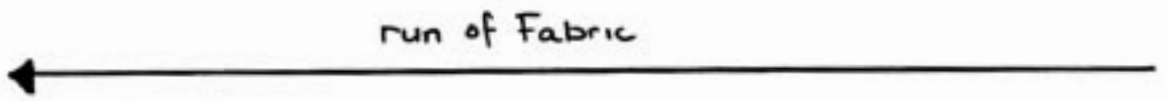
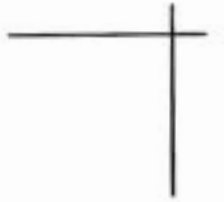
Women's Jacket 1: Sleeve - Curved - Piece I (4 of 8)



Women's Jacket 1: Sleeve - Curved - Piece I (5 of 8)



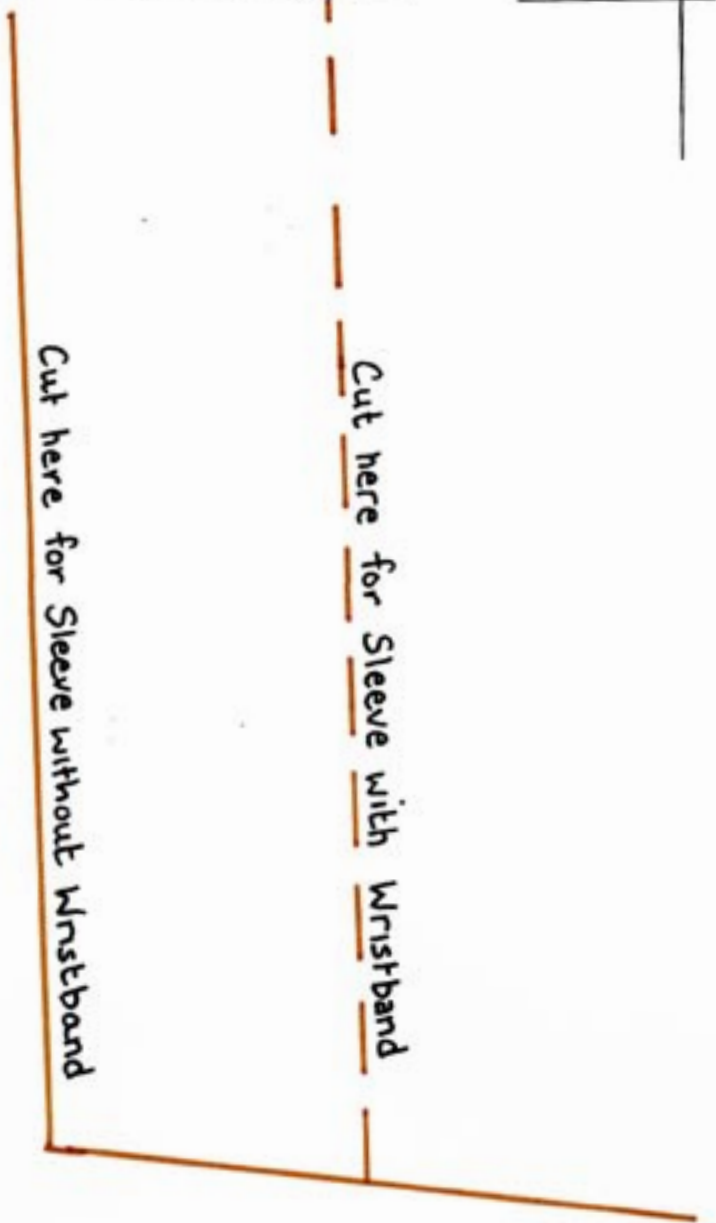
Women's Jacket 1: Sleeve - Curved - Piece I (6 of 8)



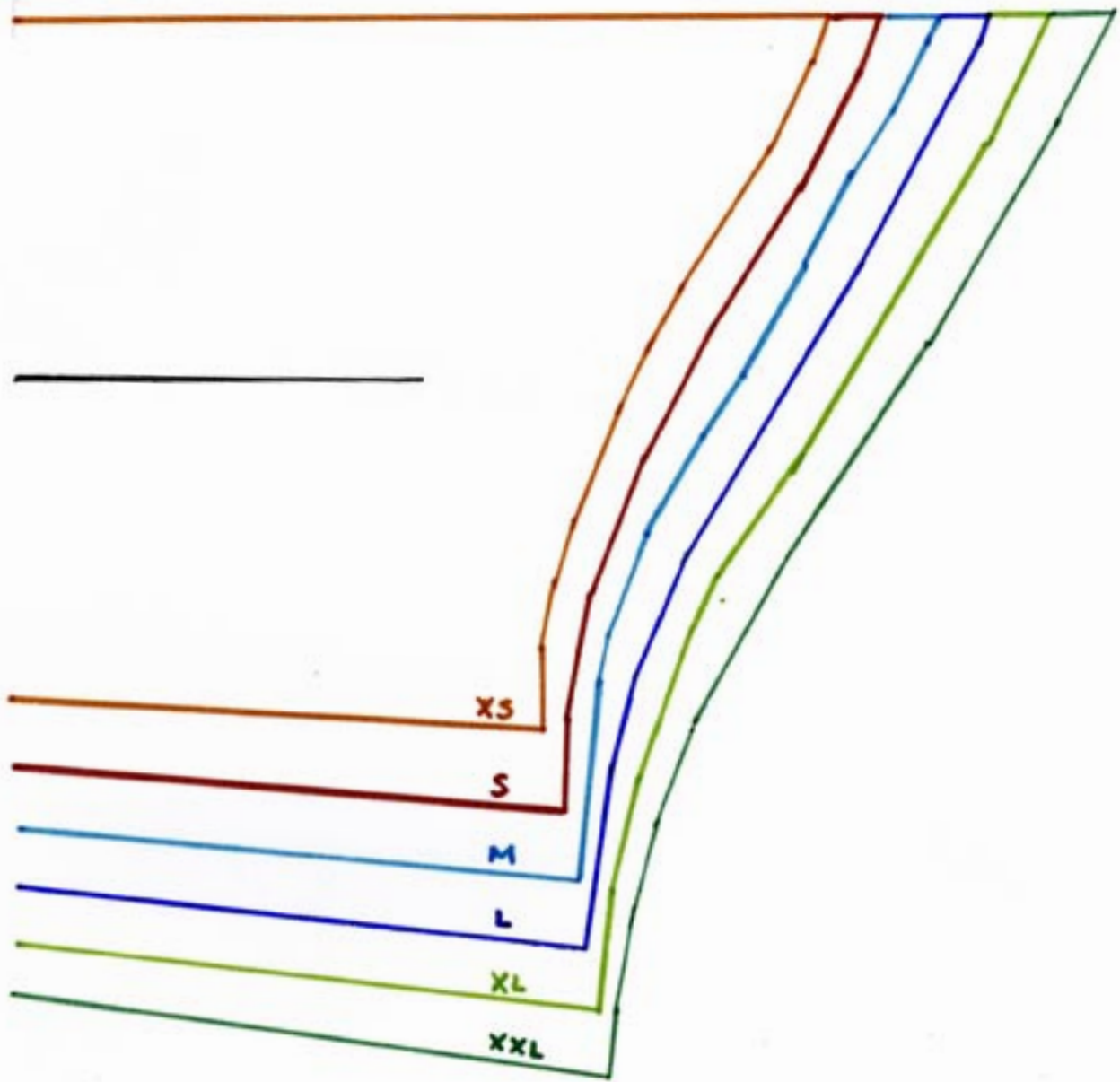
Women's Jacket 1: Sleeve - Curved - Piece I (7 of 8)



Women's Jacket 1: Sleeve - Curved - Piece I (8 of 8)



Women's Jacket 1: Sleeve - Curved - Piece II (1 of 3)



Women's Jacket 1: Sleeve - Curved - Piece II (2 of 3)



Run of Fabric



Women's Jacket 1: Sleeve - Curved - Piece II (3 of 3)

